

# Bartlett Historical Society

## 2024 Annual Report



### **The Bartlett Historical Society and Museum**

*Opened October 19, 2024!*



#### **Museum Opening Day**

Norm Head cuts the Ceremonial Ribbon  
Opening the Museum and calls out

“Who wants to be first?!”

## **Table of Contents**

2023 BHS Annual Report—Executive Summary	p.3
President’s Message	p. 4
BHS Board of Directors and Advisors	p. 6
Organizational Overview	p. 8
Membership Report	p. 11
Curator’s Report	p. 13
BHS Operations	p. 15
Bartlett History Museum—Our Strategic Project	p. 19
Financial Reports	p. 23
2024 Operational Account Summary	p. 24
2024 Museum Fund Summary	p. 25
Museum Project—Full Project Summary	p. 26
Organizational Affiliations	p. 27
Appendix	p. 28
Appendix A—Non-Discrimination Policy	p. 29
Appendix B—BHS Membership List	p. 30
Appendix C—BHS Museum Donors List	p. 33

---

## **ACKNOWLEDGEMENTS and APPRECIATION**

At the Bartlett Historical Society, every day we strive to bring our Mission to life. Our Mission is focused on the preservation of the history of Bartlett, Hart’s Location, Livermore, NH, and the surrounding region as well as offering educational opportunities to young and young at heart to learn about that history. This can only be done by having the backing of many people and supporting organizations helping us in our goal to enliven our Mission. The keys to our success are found in:

- ◇ Our sustained membership and donors
- ◇ Our museum and headquarters that have given BHS a base from which we can enliven our Mission
- ◇ Backing of local businesses and town leaders
- ◇ And in the dedication of volunteers including our Board of Directors.

We also greatly appreciate the support and guidance provided by organizations such as the NH Preservation Alliance, Mount Washington Valley Promotions, NH Center for Non-Profits American Association for State and Local History, and the Mt Washington Valley Chamber of Commerce. Their professional expertise in managing and helping non-profit organizations such as ours is invaluable.

We have several sponsors, Special Business Members, who actively support the publication of our quarterly newsletter, *The Historical Herald*. Their sponsorship of this communication tool helps us keep our members, non-member donors, and interested community members informed of our work within the organization and community.

Finally, our members are the lifeblood of our Society. Whether at the Individual, Patron, or Business level, they help us to bring the mission of BHS to life through their continued support. The real benefits of joining this historical society are just like those of joining any other non-profit organization – the satisfaction of being philanthropically involved in a cause that has meaning to the member and helping the organization be an asset to the community through the positive impact resulting from the organizations activities. Our members are the driving force behind our passion for the preservation of our local history and our efforts to help others learn about that history.

To all who help make the Bartlett Historical Society possible as a non-profit organization, we gratefully recognize your support and thank you for your involvement.

## **2024 BHS Annual Report—Executive Summary**

As we look back to 2024, a year of transition for BHS, we can be proud of our accomplishments as well as plans for the future of the society. Our most significant achievement was the opening of the Bartlett Historical Society and Museum. This achievement, and the many other 2024 milestones, were made possible because of the dedicated support from our BHS members and donors. This backing is critical to our ability to enliven the BHS Mission as we strive to be a positive influence in the community.

**BHS Leadership:** Our Board of Directors consists of a core leadership group, diverse group in thought and background, that has several years of experience running the organization. As Board members change, new members have continued this spirit of dedicated support for the Society. We end 2024 with two open Board positions. A diverse Advisory Panel also provides counsel to the Board as needed.

**Bartlett Historical Society and Museum:** In 2024, we completed our strategic project and opened the Bartlett Historical Society and Museum on October 19<sup>th</sup>. The conclusion of this project opened new doors for BHS to be able to display the history of Bartlett, Hart's Location, and Livermore as well as start or broaden our educational offerings, volunteer program, and historical research projects. The opening of the museum also kicked off a significant transition of organizational focus where we are now responsible for the care and management of an operating museum. This is causing us to adjust our operational focus and giving us a new platform in which we can welcome the public as we define and refine our operational practices while striving to be the leader in local historical societies.

**Membership:** Our 2024 membership increased by 8% (to 276 members) over our 2023 membership total of 265 members. We were very pleased to welcome several new members, many of whom were prior museum donors, plus welcome back several individuals who had let their memberships lapse. The opening of the museum has already helped boost our 2025 membership drive as people are excited to be a part of the organization that achieved a long standing goal with the opening of our museum and has a lot to offer in terms of cultural and educational opportunities.

**Operations:** In 2024, our operational focus was on the practices needed to operate our museum. Our focus on operational effectiveness in the museum will be an ongoing effort. From an operational programming perspective, we hosted three interesting events in our Quarterly Presentation Series (the fourth was cancelled as it conflicted with the museum opening events). We continued to do fundraising events with our golf tournament, annual raffle, and dining benefits. We published four well received newsletters, containing feature articles about the lives of local "historians." Finally, we have continued to see an increase in inquiries via our website asking about features of Bartlett and local history as well as exploring genealogical information.

**Participation in Regional Non-Profit Program:** We became active participants in a program being led by the Director of the Museum of the White Mountains at Plymouth State University. The "Know Your Neighbor Summit" was designed to bring leaders of many different non-profit organizations together to discuss and seek solutions for many challenges common to all non-profits. BHS President, Phil Franklin, was asked to do a presentation on the challenges and eventual success of the museum renovation project. We hope to continue to be engaged with this program in 2025.

**Financials:** BHS remains in a financially strong position as donations and memberships increased in the last quarter of 2024. Additionally, surplus funds from the museum project will be transferred to the standard Operational Account. A decision was made to form sub-accounts under the Operational Account for 1. general operating funds; 2. a building maintenance reserve; 3. a collections and artifacts reserve; and 4. a BHS endowments fund. These funds will be put in place as we close the BHS Museum Fund account at the start of 2025 and consolidate our finances to one locally managed bank.

**In Summary:** 2024 was another good year for BHS because of efforts made by the BHS leadership, advisors, and assistance from various members. We continued to challenge ourselves to provide more opportunities for member and public engagement in BHS activities, we made headlines twice in the Conway Daily Sun with our museum project achievements, and we have set a path for 2025 and beyond that, with continual care and solid management, will allow BHS to be an important part of the community for years to come. We look forward to the challenges of 2025.

## **President's Message**



2024 was a milestone year for the Bartlett Historical Society. Since the beginning of the organization in 2006, the Historical Society has never had a truly permanent home or place to display their collections of historical artifacts. 2024 changed all of that with the opening of the Bartlett Historical Society and Museum building at 13 School Street in Bartlett. While this event was the highlight of the year for the Historical Society, there were many other noteworthy achievements and planning activities that made 2024 a significant milestone year in our history.

The Mission of the Bartlett Historical Society centers around two things. The first part of our Mission focuses on the preservation of the history of Bartlett, Hart's Location, and Livermore. This also includes the efforts to research little-known or unknown aspects of that historical story. The second level of our Mission focuses on sharing that historical knowledge with anyone interested in learning about the history of these three towns and our region. To do this, we have programs and facilities that offer opportunities for people to gain a better understanding of the world left to us by our forefathers. Our museum provides a perfect opportunity for both the discovery and sharing of our local history.

The Bartlett Historical Society, like many other non-profit organizations, faces challenges that continually threaten our existence. These include things such as retaining and growing membership, attracting donations to allow us to pay our bills, and keeping ourselves relevant in the eyes of the community. As a non-profit organization focused on the broad term, "History," we run the risk of being trapped into the old adage that "History is boring." This leads to the question of "why should we bother studying history?" We are also faced with the fact that there are many other non-profit organizations focused on more pressing human needs that rightly should be addressed. These organizations can draw attention away from our mission and make it more challenging to be a successful historical society. The leadership of BHS is well aware of these challenges. We have been working to retain and grow our presence in the local non-profit community while also recognizing the importance of the missions of the other non-profit organizations in the same community.

As we have noted, our focus is local history, and to that end, we are taking several steps to be a learning experience and option for residents and visitors alike. We continue to look forward to improving and expanding our efforts to keep history relevant because, History Matters! In 2024, we did a good deal of planning in several areas to bring awareness of BHS to the local and regional community. Examples include:

- ⇒ Museum Display of Historical Artifacts: Our opening of the museum provided a broad overview of local history with the different exhibits set up for viewing. Our plans are to change certain displays in the future to provide more concentrated focuses on specific aspects of local history.
- ⇒ Membership: Our members are the heart of our organization. We have recognized that we keep relying on the same group of members, by and large, to renew their memberships. While our membership has grown over the past few years, we attribute that to the conversion of non-member museum donors becoming BHS members. We need to develop a model that will attract new members from outside our current sphere of members to ensure our organizational future.
- ⇒ Financial Outlook: BHS is on solid financial ground at present. A spike in donations to the museum project in 2023 and 2024 allowed us to complete that project. Similarly, we have seen an increase in donations to our BHS operational fund. We have recognized, however, that with our building, we have new responsibilities for the upkeep of that structure as well as the need to contend with rising costs of goods, services, and materials needed to keep the organization afloat. We are in a continual fundraising mode and our methods need to be innovative, giving people a reason to donate. Current fundraising efforts have included a golf tournament, dining benefits and other miscellaneous activities. To demonstrate our improved fiscal responsibility, in 2025,

Continued on next page

we will establish four funding channels that will focus on ongoing operational costs, building maintenance, historical collection opportunities, and a BHS endowment program.

- ⇒ Marketing of BHS: We need to provide continual reminders that BHS is a community organization and provides a community benefit. We currently offer our Quarterly Presentation Series, quarterly newsletter, and website that help us provide news of BHS activities and share our historical learnings. However, we are planning to broaden our community network through participation in a forum focused on non-profit needs, utilizing association memberships that can help us expand the awareness of BHS through their networks, and keep a continual reminder of BHS activities through local media.
- ⇒ Living Our Mission: We continually focus on our Mission of historical preservation and learning opportunities. By doing this, we plan to expand our historical research efforts, engage people in volunteer activities, increase the BHS online presence, and seek active involvement in community organizations such as the Bartlett Public Library and the Josiah Bartlett Elementary School.

2024 opened a new chapter in the story of the Bartlett Historical Society. Our museum helped bring attention to the organization in many different positive ways. Our planning for the future of the organization has helped us chart a course for the continued growth of the organization, increased participation by members volunteers, and a sustainable operational framework.

In closing, I would like to thank the BHS Board of Directors for their continued support and engagement in the organization. We have had several interesting and challenging discussions in the past year, all focused on making BHS a better organization, community member, and more Mission focused. Our Advisors also played an important role in our direction and decision making. Their support brings in different perspectives that help round out the facts and considered impacts of decisions. We thank them for their ongoing support. Finally, I thank our members and volunteers for their continued support and engagement. BHS exists and is growing because of your support.

Looking forward to 2025, I see continued success for the Bartlett Historical Society. While there will be challenges, we should view them as opportunities.

If you have any questions about the Bartlett Historical Society or the information in this Annual Report, please drop a note to us at our email, [BartlettHistoryNH@gmail.com](mailto:BartlettHistoryNH@gmail.com) or directly to me at [Phil@BartlettHistory.org](mailto:Phil@BartlettHistory.org). We hope you enjoy reading this Annual Report and encourage you to join our historical society if you are not already a member.

Sincerely,



Phil Franklin  
President, Bartlett Historical Society



**Preserving the Past in the Present; Looking to the Future**

Our Bartlett Snow Roller from the turn of the 1900's – Renovated 2015

Located in the Water Precinct Park, corner of Albany Avenue and Route 302

## **BHS Board of Directors and Advisors**

The Board of Directors of the Bartlett Historical Society is comprised (currently of five individuals with diverse personal backgrounds. While we may approach things from different perspectives, we all share and support a common desire to see the history of Bartlett, Hart's Location, and Livermore researched, documented, preserved, and shared.

<b><u>2024 Bartlett Historical Society Board of Directors</u></b>		
<b>Board Member</b>	<b>Position</b>	<b>Brief Biography</b>
Philip Franklin	President, Director	Phil joined the BHS Board in 2015 as the Secretary; in 2018 he became the President of BHS. He is a retired Program Director from The Hartford in Hartford, CT. He has held leadership roles in other non-profit organizations such as Xavier High School, Middletown, CT (Xavier Board of Trustees and Xavier Alumni Board of Directors); Hospital for Special Care, New Britain, CT (Foundation Board of Directors) and MYARC Community Resources, Middletown, CT (Board of Directors). In Bartlett, he served as the Chairman of the Bartlett Planning Board as well as a Director on the Stilling Grant Association. For the past several years, he has served as a Bartlett Ballot Clerk. In 2023, he was a member of the Feasibility Study for a New Bartlett Fire Station. In August 2024, Phil was appointed as the Assistant Moderator for the town of Bartlett; in December 2024, Phil was appointed as Moderator for the town of Bartlett.
Hannelore Chandler	Vice President, Director	Hannah has been a member of the BHS Board since its inception in 2006. She has served as the Treasurer for the organization until 2017 when she took on the role of Vice President. Hannah has a very extensive business background in advertising, bookkeeping, human resources, real estate and owned MMC Resort Rentals and Realty.
Susan Franklin	Treasurer, Director	Sue joined the BHS Board in 2017. She is a retired Assistant Director from The Hartford in Hartford, CT where she worked in the Governance, Risk and Compliance Department. She is very adept at managing the organizations accounting books. An avid quilter, Sue is a member of The Material Girls, an organization that makes and donates quilts to various organizations for clients in need in the Mt Washington Valley. For the past several years she has been a Bartlett Ballot Clerk.
Kathleen Howard	Curator, Director	Kathy has been our BHS Curator and member of the BHS Board since 2009. She catalogs the BHS collection of artifacts as well as records genealogical information on Bartlett folks. Kathy is also our Membership Coordinator. She has an extensive background and practice in library science/management working for Yale University, Wake Forest University, and Bayer HealthCare – Pharmaceuticals.

<b>Board Member</b>	<b>Position</b>	<b>Brief Biography</b>
Scott Mallett	Secretary, Director	Scott joined the BHS Board in February 2022. He was raised in the Glen section of Bartlett. He has always had a strong interest in local history, particularly, the history of our local railroads. Scott's career was focused on the food service industry until he became disabled with the loss of his leg. Since then, he remains very active working to support local non-profit organizations. Most notably, Scott is the founder of the Bartlett Roundhouse Preservation Society.
Norman Head	Director, Emeritus	Norm stepped in to serve as a BHS Board member to temporarily fill one of the two open Board positions. Norm was one of the founding members of BHS, serving as the President of the Society until he turned the role over to Phil Franklin in 2018.
Open Board Positions		We currently have two open positions on the BHS Board of Directors as we close 2024.

<b>BHS Board of Directors – Advisory Panel</b>				
J. Hadley Champlin	Michael Chandler	Bill Duggan	David Eliason	Norman Head
George Howard	Anne Pillion	David Shedd		

**BHS Board of Directors – Advisory Panel**

The BHS Board also places a great deal of weight on the guidance given by several Advisors. Each of these people shares the Board's zeal for our local history and, to that end, offer the Board the best of their wisdom on a variety of topics for managing and promoting the historical society.

Administrative Support for BHS Board of Directors: In October 2021, the BHS Board of Directors welcomed the volunteer services of Sue Chula as our Recording Secretary and BHS videographer. We are very appreciative of the support provided by Sue. Sue is responsible for:

- Recording, assembling and distribution of the minutes from BHS Board meetings
- Video recording of our quarterly presentations. We started recording these presentations with our October 2021 event.

**BHS 4<sup>th</sup> Annual Golf Tournament**



June 8, 2024  
Linderhof Golf Club  
Tournament Photos

## Organizational Overview

### **Bartlett Historical Society Mission:**

- ◆ The collection and preservation of data and items pertaining to the history of Bartlett, Livermore and Hart's Location, NH
- ◆ Stimulating interest in the history of Bartlett, Livermore and Hart's Location, NH through the promotion and conducting of educational opportunities and events related to the history of these three towns.

### **Organizational History**

The Bartlett Historical Society was formed in 2006 as a 501 (c) 3 non-profit organization.

Inception of BHS: From its inception, the Bartlett Historical Society gained momentum as a good cross section of local people were involved in the organization at the leadership level. Various committees were formed to research and document things such as the different town cemeteries, railroad activity, and military service by townspeople. The society also established a quarterly presentation series and, in past years, has held an occasional community dinner. All these things were done to help promote the organization and enliven the educational component of the society's Mission statement.

Story Land Chalet as Initial Headquarters: In 2006, the society was granted use of a chalet that is owned by the Story Land organization. This chalet was intended to be the headquarters of the society but, over time, proved to be too small for the organization and was relegated to being a storage location for many of the historical items in the care of the society. With the opening of the museum, all of the BHS owned items have been removed from the Chalet and the property has been turned over to Story Land at the end of 2024. Since 2018, we have also rented space for the storage of artifacts and BHS property at the Glen Warehouse facility.

Initial Excitement Loses Energy: Over time, interest in the historical society seemed to wane. As this occurred, donations and memberships also began to dwindle. Over the period of 2011 to 2015, membership had dropped from a high of just over 150 members to a low, in 2015, of about 70 members with a steadily declining trend. Donations had dropped to nearly zero also.

Revitalization: In 2015, with the addition of some new BHS Board leadership, four things occurred:

- Fundraising Activities: Community-based activities were restarted with the focus on benefit dining events as fundraisers
- Memberships in Professional Organizations: BHS established memberships in organizations such as the Mount Washington Valley Chamber of Commerce, Mount Washington Valley Promotions, the NH Center for Non-Profits, American Organization for State and Local History, and the NH Preservation Alliance. These memberships helped improve our marketing of the organization and in-person presence through attendance at events such as the Chamber Business Expo
- Communications with Membership: In 2016, the BHS newsletter, *The Historical Herald*, was reintroduced as a communication vehicle with our members and non-member donors. This quarterly communication tool helped people learn more about the activities of the historical society and, ultimately, see that the organization was working to add value to the community
- Bartlett History Museum Project: In 2016 BHS officially embarked on a campaign to raise the funds to save and renovate the historic former St. Joseph Church building (efforts leading up to this campaign started in 2014 and 2015). Our goal was to transform the building into our Bartlett History Museum. This goal was met with the opening of the Bartlett Historical Society & Museum building in October 2024.

These four steps showed positive results and increases in both memberships and donations to the organization. In 2024, our membership numbers reached a new high with 276 dues paying members marking an 8% increase from 2023. This represents the eighth consecutive year of membership increases.

BHS Board of Directors in 2024: Continuing from 2023, our 2024 review shows that the historical society remains on solid footing from a leadership perspective. We have a strong, active, and diverse board of directors. In 2024, our Board members were the same as in 2023. Norman Head, a past BHS President, stepped in to temporarily fill a board position in 2024 until we could engage at least one additional permanent board member. At the end of 2024, however, we are looking to fill two open Board positions.



Fiscal Management: With the opening of our museum and completion of the building renovation, we have set in place a plan to close the BHS Museum Fund and transfer any remaining funds into the BHS Operational account. This will be done at the beginning of 2025 after an accounting review by our CPA. We have also outlined a four part structure for our operational fund management to be implemented following the CPA review—1. General Operation Fund; 2. Building Maintenance (Reserve) Fund; 3. Collections Development Fund; 4. BHS Endowment Fund. Each fund, having a specific purpose, will allow better financial management of our funds.

Forward Looking Forecast: Looking forward, we see a bright future for the Bartlett Historical Society. Moving forward, we plan to 1. Expand our membership drives beyond the current roster of members and donors; 2. Encourage two-way communications with members by informing them of BHS activities and hopefully receiving feedback from them; 3. Begin a strong push on historical research for our three town scope; 4. Look for creative fundraising opportunities to help cover our operational expenses; 5. Work on creating a sustainable future for BHS through volunteer programs, attracting future leaders, and establishing a sound financial base.

## **Constituency**

At the broadest level, the Bartlett Historical Society’s constituent base is “the general public.” More specifically, we look at our constituents as:

- Our BHS membership
- Non-member donors to BHS
- Members of the public who have an interest in the preservation of local history
- Members of the public who are interested in learning more about our local history.

As an organization that is open to anyone for either membership, donations, or general interest, we have adopted a non-discrimination policy (see Appendix A).

## **Current Community Impact**

The Bartlett Historical Society is making inroads into our local and regional community as follows:

1. Bartlett History Museum: A long awaited significant step forward for BHS was the opening of our Bartlett History Museum in October 2024. With this opening, we saved a historic building in Bartlett, reopened that building as a cultural center focused on the history of Bartlett, Hart’s Location, and Livermore. Community members as well as visitors from away have been stopping by the museum and expressed their appreciation for BHS transforming the building into our museum as well as expressing their appreciation for the displays we have set forth
2. Expanding BHS Volunteerism: Another positive impact of the museum is our ability to create new volunteering opportunities. We have already used volunteers to conduct a time consuming task of preparing our newsletters for mailing and cataloging our library books in the museum. As we advance to 2025, we will continue offering ways for people to volunteer in BHS activities.
3. Know Your Neighbors Summit: Participation in the Know Your Neighbors Summit meetings at Plymouth State University is broadening the awareness of BHS activities to a state wide audience. BHS President, Phil Franklin, was a featured speaker at a meeting of this group in October 2024. He has also made contacts with several people from other historical societies and agencies in the state with the eye on formalizing this group and in the process, making people more aware of BHS activities.

## **Projected Community Impact**

As we venture into 2025, BHS is focused on continuing to use our museum as a central point of interest in the community. We are looking to expand our horizons locally by engaging in new or broadened educational programs as well as in the discovery of forgotten historical facts that will enhance local awareness of the efforts and activities of our forefathers that have helped shape the community of today. Our efforts include:

1. BHS/JBES Reengagement: We are working with and receiving positive feedback from the administration of the local elementary school around the idea of reengaging our two organizations to help educate the students on our local history. Further discussions will be held to solidify this engagement
2. Interaction with the Bartlett Public Library: We had one meeting with the BPL trustees and agreed to resume meetings to coordinate BHS and BPL historical education activities in 2025
3. Expanding Our Research Resources: We are working with the NH Preservation Alliance and plan to engage with the State Archivist to learn of additional information sources to allow us to expand our historical discovery activities. This will allow BHS to be a stronger community resource for local history
4. Expanded Educational Offerings: Explore the idea of offering workshops for people to learn about doing things such as genealogical research or researching the history of their old house.

We are looking at research projects as a central means of broadening our engagement in the community. We are also using these research projects as a means of continuing and expanding our collection of oral histories received in interviews with people knowledgeable in local historical topics. We also hope that these projects will spark people into being actively engaged in the discovery activities, thereby expanding our community impact and strengthening BHS as a community member

Taking the concept of more engaged volunteers further, beyond research projects, we envision volunteers will be able to assist with the running of the museum, becoming ambassadors for the society at promotional events, or helping with administrative tasks in the museum. Through the museum and attracting of different volunteers, we hope to engage younger people in the organization and ensure the longevity of the society.

All these plans and ideas will have a positive impact on the community and help solidify BHS as a forward thinking “citizen” of the Bartlett and regional community.

A Special Note of Appreciation: Early in 2021, the leadership of the Bartlett Congregational Church informed the BHS Board that we could use their church sanctuary for our BHS presentations and their basement meeting room for BHS meetings. They continued to allow us to use the church in 2022, 2023, and 2024. Their support allowed us to continue to do our presentation programs and meetings while we worked on the renovation of our Bartlett History Museum. We truly appreciate their support and cannot thank them enough for the use of their building. Even though we now have our own facility for our meetings and other events, the church leadership has offered us the option of using their kitchen facility if we want to host a community dinner, for example. This is a true reflection of community spirit.



Bartlett Congregational Church

Through the years, the parishes of the St. Joseph Church & Congregational Church assisted each other in times of need. That tradition carries on today with BHS.

# Membership Report

## 2024 Membership Drive

Membership in the Bartlett Historical Society is open to anyone with an interest in Bartlett’s past, regardless of home location, age, race, gender, religion, personal orientation, or political affiliation. We welcome all new members and appreciate the loyalty and support of our renewing members.

2024 Dues Levels: Our 2024 BHS Membership Drive was opened in December 2023. Membership dues remained constant to 2023 at the following levels:

General Membership:	\$20
Patron Membership:	\$50
Business Membership:	\$100

Our membership “year” is January 1 through December 31, in line with our fiscal year.

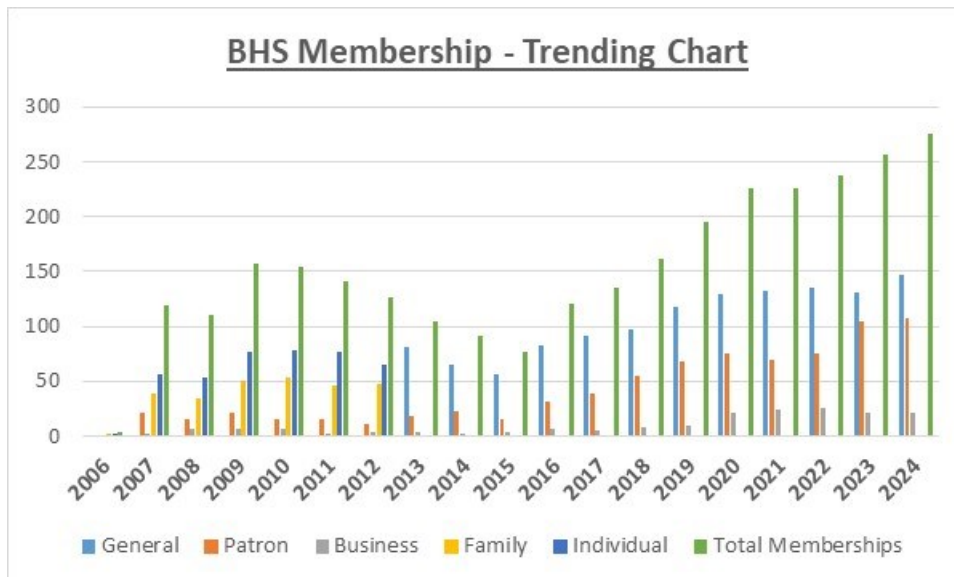
2024 Membership by Level: The 2024 BHS Membership Drive resulted in 276 members including 42 new members plus 16 returned members (from previous years). The breakdown of memberships by levels is:

General Membership:	147	(2023 was 129)
Patron Membership:	108	(2023 was 104)
Business Membership:	19	(2023 was 21)
Lifetime Membership:	2	(awarded to members based on BoD decision)

Overall, the 2024 membership numbers show an increase of 20 in our membership rolls (an increase of 8% over 2023). Several new members were formerly non-member donors to our museum project. We will continue to encourage people to join BHS as new members and work to retain current members as we move forward in our 2025 membership drive.

While it is early in our 2025 Membership Drive, we have already had 130 memberships taken with BHS since the start of the 2025 campaign in December 2024.

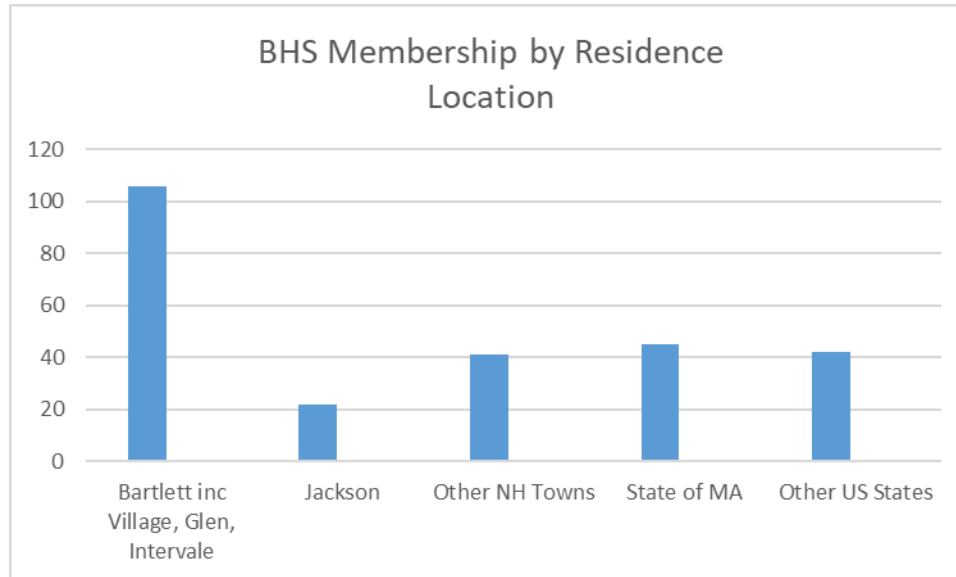
Sustaining and Expanding Membership: We are searching for ways to reach out beyond our existing “bubble” of members to seek additional membership support. Ideas include a press release in the Conway Daily Sun, incentives at workshops for “free” admission with a membership, and meeting with other civic groups in the area. We will continue to look for new ways to encourage people who are not already members to join BHS.



Note: From 2006 – 2012, BHS had two different membership categories, ‘Family’ and ‘Individual,’ that were replaced by ‘General’ in 2013.

## Membership Geographic Dispersion

BHS membership in 2024 was concentrated within the towns of Bartlett and Hart's Location (41% of members) with the remaining members scattered across New Hampshire and several others across the country. Another concentration of members is from Massachusetts with 18% of our membership hailing from that state. This is predominantly because Bartlett has many second homeowners from Massachusetts. Other states represented in our 2024 membership roster include CA, CT, DE, FL, IL, MD, ME, NC, NJ, PA, RI, TX, VA, UT, VT, and WA.



2024 BHS Membership List: A complete list of our 2024 BHS Members is found in Appendix B of this report.

## Future Considerations Regarding Membership

Our members are our most important constituents. We are continually looking for ways to invite more people to join and sustain their membership in the historical society. Many factors cause people to join BHS or, conversely, drop their BHS membership. In trying to understand these factors, the BHS Board has several challenges as we look at our strategy for membership retention and attraction of new members. It is worth noting that the points below are common to all our neighboring local historical societies. One of the common reasons for a person's membership being dropped is their death. In 2024, several members passed away. Many of our members are older and, unfortunately, dying is an unavoidable part of living.

Some of the things we should continue to explore include:

- ⇒ How to engage younger people and even students in the historical society?
- ⇒ What are the motivations and expectations of people who are joining the historical society?
- ⇒ What are the motivations and expectations of members who have retained their memberships?
- ⇒ Why do members drop their BHS membership?
- ⇒ What types of programs we can offer to attract and retain people "from away" as BHS members?
- ⇒ Additionally, for people outside the Bartlett area, how can we engage them in BHS to make their membership "meaningful?"

With 59% of our members from other states or other locations in NH, we will continue to actively explore methods that will allow these members to participate in BHS activities and see what BHS is doing. We will be able to provide a location for people to come and experience the history of the three towns we cover. For those unable to join us in person, we plan to offer expanded online access to the museum and broaden our social media platform including supporting a Bartlett Historical Society (NH) YouTube channel. This will hopefully provide alternative inducements for people to join the society. We'll have more to report on this development in our 2025 Annual Report.

# **Curator's Report**

## **Museum**

In preparation for the opening of the Museum, all materials stored in the chalet and various other locations were moved into the building. Inventory lists were compared with items moved in to determine missing items. Fortunately, most items previously cataloged were located. PastPerfect database records are currently being updated with condition and location information.

Museum displays were set up using previously cataloged materials and arranged by subjects such as Bartlett Schools, Kearsarge Peg Mill, Livermore, National Forest, CCC, Railroads, Hotels, Churches, Lumber Industry, Retail Stores, and Hart's Location. These initial displays were created to give a "feel" for the materials in the current Museum collection. It is our plan to change displays every six months, planning displays around an overall theme.

We expect to spend the next year cataloging the large backlog of materials previously donated as well as new donations which arrive weekly. Recent donations include Bartlett Water Precinct records and Bartlett Fire District records. We are hoping to recruit volunteers to help with the organization and cataloging of these materials.

## **Materials**

The Bartlett Historical Society uses the PastPerfect database to track and inventory items donated or collected. This database allows us to catalog items by category and also allows us to maintain comprehensive membership and donation records as well as providing us with the means to maintain a "People Biographies" database consisting of historical biographical records for Bartlett, Livermore and Hart's Location residents.

The current BHS collection consists of 79 cataloged "Objects". These objects consist of household objects (dishes, linens, etc), toys (dolls), manufacturing artifacts (wooden pegs), posters, souvenirs, transportation items (railroad spikes) and many other miscellaneous items.

The "Archives" portion of the database consists of various papers and documents collected or donated. Local newspapers are searched for any relevant articles, advertisements, obituaries, etc. related to Bartlett and these articles are clipped and stored in folders in the archives collection. Currently there are 288 specific folders containing articles and miscellanea related to various Bartlett subjects. In addition, there are another 181 individually cataloged documents in the Archives collection.

The BHS "Photographs" collection contains over 120 cataloged photographs and cataloging continues on the backlog of donated photos. One of the problems encountered is the lack of identification of the people or places in the photos. We have created a Museum display of "mystery" photos hoping visitors may be able to identify some of the photos and hope to change this display frequently. The BHS also has a large postcard collection which is currently not cataloged. Plans are to catalog each postcard and, eventually, scan the image into our database adding to the "Photographs" section of our database.

The "Library" portion of the BHS collection currently consists of 400 cataloged books and journal titles. Notes relevant to Bartlett have been added to records where appropriate and will help in research, eliminating the need to scan the contents and indexes of each item.

## **Genealogy**

We now have more than 10,000 biographical entries in the PastPerfect database. These simple biographies have been added or updated through research into the Town of Bartlett vital statistics records, Ancestry.com and information found at the website Findagrave.com. A review of the existing records with the goal of filling in any missing information (dates, names, burial site, etc.) with any new or additional information contained in Ancestry.com records was begun in 2024..

A new project was begun in 2022 to research names which appear on the US Census reports. Census information is currently being added to existing People biographies. New records for individuals in the Census records but not currently listed in PastPerfect will be added as information is researched in Ancestry.com.

Census records for Bartlett will be an ongoing project. The number of individual names is far larger than the Hart's Location or Livermore listings. Bartlett's records also predate the other towns. 20<sup>th</sup> century records have only been released through 1950. However, the decline in the population numbers in Livermore and Hart's Location make those towns easier to follow and document. 20<sup>th</sup> century population growth in Bartlett enlarges the volume of names needing research.

Along with the "People Biographies" in the PastPerfect database, we also maintain a cemetery index in an Excel spreadsheet. This index to Bartlett gravesites now contains information on over 1800 individuals and is periodically updated by comparison with information available on the Findagrave website. Comparison updates were completed in 2024.

### **PastPerfect Database**

We are currently working with individuals at PastPerfect to complete the data conversion needed to create an online version which will eventually be available on our website. We expect to have a "test" version available for BHS staff to work with by the end of January 2025 with plans for a "live" version on the website by April of 2025.

### **Future**

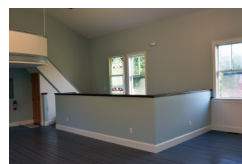
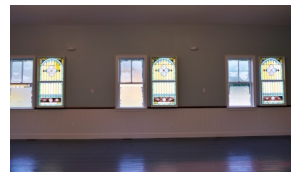
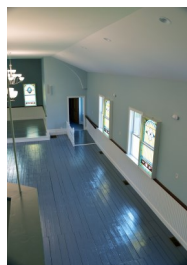
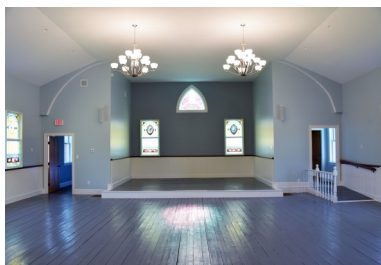
Once again, we ask your help in donating items of history to the collection. Every effort is made to treat your donations with the respect and care that they deserve. The Bartlett Historical Society Museum now provides much needed space to preserve and display what the Society currently owns and will also provide a "home" to any items donated in the future. We look forward to the coming year as a productive one with continuing organization, research and storage of the current collection and any future additions.

Respectfully Submitted,

Kathleen Howard

Curator, Bartlett Historical Society

## **Museum Photos Before Displays Installed**



## **Bartlett Historical Society—2024 Operational Review**

In this section of the report, we focus on the business of running the historical society. In 2024, operations continued as normal. In past years, our fundraising efforts were primarily through local events with dining benefits sponsored by local restaurants. In 2024, we had three dining events and our golf tournament as our major fundraising events. Through other events (i.e., Quarterly Presentation Series events, museum open house event, photo raffle) we raised sufficient funds to cover all of our operational expenses while absorbing a significant increase in our insurance premium as an unexpected cost. As we have in the past, undesignated donations were directed to the BHS Museum Fund.

We continued to use the Bartlett Congregational Church as our meeting venue through October 2024. A conversation between Phil Franklin, BHS President, and members of the church’s leadership council, we confirmed the church’s willingness to allow BHS to continue to use their facility in 2025 if needed. We have informed them, however, that we will use our own museum building for events and meetings as the museum building is now fully functional.

### **2024 Operational Accomplishments**

<b>Time Frame</b>	<b>Event/Activity Description</b>
Monthly	BHS Board of Directors met to conduct the business of the Society
Quarterly	We published four newsletters on our normal quarterly schedule
January 2024	BHS Sponsored a presentation by Erin Moulton, NH Humanities speaker, titled The Mammoth Road: NH Folk Tales; about 50 people
April 2024	BHS sponsored a presentation by Ed Parsons on Hiking in the White Mountains; about 40 people attended this event
March 2024	BHS was hosted by the Red Parka Pub for a dining event; we raised about \$175 from the event;
May 2024	We launched our fourth raffle event with four seasonal photos from the area by Phil Franklin. The drawing was scheduled for October 16, 2024
June 2024	4th Annual BHS Golf Tournament is back; 35 golfers attended this nine-hole event at the Linderhof Country Club; BHS netted about \$3,500
June 2024	BHS sponsored a presentation by Rob and Marion Owen on their lives as professional clowns; about 35 people attended this event
July 4, 2024	Coinciding with the Bartlett Fourth of July Parade, we opened the future BHS museum building for a Renovation Open House. About 105 people came in to see what we are doing with the building. All were impressed.
September 2024	BHS is hosted by the Conway American Legion Post for their fish fry dinner event; about \$175 was raised from this event
August & September 2024	BHS focus was on the completion of the museum setup process for the October opening event
October 16, 2024	BHS raffle prize willer drawn, Adel Hollum of Conway took home the four seasonal photographs
October 2024	October 18 <sup>th</sup> , BHS Museum Grand Opening Special Event for top level donors; October 19 <sup>th</sup> , BHS Museum Grand Opening to the public 4th Quarter presentation was cancelled due to the proximity to the pending grand opening
December 2024	The BHS 2023 Membership Drive is opened  BHS is hosted by the Red Parka Pub for a dining event; \$110 was raised

All-in-all, feedback from all our events was positive, “vase” donations at the entry door for our museum open house, and quarterly presentations were generous. Our photo raffle was mildly received as the ticket returns were about half as much from when we did the quilt raffles. We will look for a more enticing raffle idea for 2025.

## **Administration of the Organization**

2024 was a transitional year for BHS. We were switching from an organization focused on the renovation project for the BHS Museum to the opening the museum, adding that to our existing operational routines. As a result, our focus was on the final details and set up of the museum for the October grand opening events and changes to the operational structure of BHS from the introduction of our permanent headquarters and closing of the renovation.

- The BHS Board was run with a five person leadership team for most of 2024. Our search for two additional members for the Board proved fruitless. While candidates were interviewed, all turned us down saying that they were honored to be asked but were too busy with other commitments. We did have a former Board member agree to fill in during the fourth quarter of 2024. Our search for two Board members continues into 2025.
- The Board also engaged members of an Advisory Panel for counsel on selected topics; the topic at hand determines the advisor(s) to be consulted.
- We continued to consult as needed with our accounting firm, Leone, McDonnell & Roberts of North Conway, on questions primarily related to the filing of our 2023 IRS tax return and capitalization of expenses related to the museum project. We were granted a filing extension by the IRS to allow the accountants to address questions that we presented. The full 990 filing was completed in September 2024.
- Our exploration of broadened uses for social media to promote BHS and engage members from away stalled in 2024 due to the intense focus on the preparations for the opening of the museum and challenges engaging a consultant who was supposed to be our media guide.
- Recognizing that there are topics of historic importance of which we have little or no information, we have continued adding to our list of future research topics and started gathering information on others.
- Following up on a 2024 goal to document our policies and procedures, we have targeted what we deem to be the four most important operations in our BHS “business.” These are financial management, membership management, cataloging and tracking our collection of historic artifacts and documents, and communications with members and the public. While some work was done on this documentation, a concentrated effort will be needed in 2025 to complete this work.

## **Operational Financials**

From a financial perspective, the organization remains in good financial shape with sufficient funds to cover all our day-to-day financial obligations. The bulk of our income is received through membership dues. We also received income through general operating fund donations and fundraising events. The third installment of a three year unrestricted operational grant was received from the NH Charitable Foundation. These funds will be used to supplement our operational expenses. Our newsletter publication and mailing costs were covered through the generous donations of our newsletter sponsors, local businesses we treat as “Special Business Members.” Expenses are kept to a minimum. Administrative costs for office supplies, computer expenses (e.g., software licensing, equipment upgrades, etc.), insurance and utility costs for our building are the largest expenses. In February 2024, our previous insurance carrier, The Hartford (liability & property coverage), nonrenewed our policy stating that our building was “too old” for their coverage guidelines. A scramble for new covered concluded in May as Hanover Insurance picked up our liability & property coverage needs. As in previous years, we continued to review our financial status for our general operating account and museum account at BHS Board meetings on a monthly basis. The Treasurer distributes several detailed reports prior to each Board meeting. Details on the BHS financial status can be found in the Financial Reports section of this report.

As noted above, in 2025 we are planning to engage our accounting firm, Leone, McDonnell & Roberts of North Conway, to complete a review of our museum and operational books. Following this review, we close the BHS Museum Fund, moving any excess renovation money to our operational account and consolidate the two accounts into one with a local bank. We have not changed any accounting practices in 2024 and those practices that we used were reviewed and approved by the accounting firm in our last review process.

BHS remains in good standing with the state of New Hampshire as a non-profit organization and is current with all required IRS filings.



## 2024 BHS Objectives Results

At the end of 2023, the BHS Board of Directors established the following objectives for the organization in 2024. Each of these objectives is targeted to improve or strengthen our organization as a “citizen” in the community.

Objective 1: Complete the Museum Renovation Project: Show measurable progress toward the completion of or reach the actual conclusion of the renovation of our future Bartlett History Museum

Results: The General Contractor portion of the renovation was completed in April 2024. Follow up work by BHS volunteers and a couple of sub-contractors stretched on to July 2024. Preparations for the move into the building started in June 2024 as we centralized our collections from different storage areas, made plans for how we would move into the building, and started the actual move in and setup process in August 2024. Museum setup was complete for the Grand Opening weekend of October 18<sup>th</sup> through 20<sup>th</sup>.

Objective 2: Development of Operational Preparedness Documentation: BHS currently has skeletal documentation for operational processes and procedures. In 2024, we should work to prioritize the development of documentation outlining the processes and procedures for our most critical functions. These are:

- Financial management steps taken by the Treasurer
- Membership management steps taken by the Membership Coordinator
- Cataloging and tracking our historical collections
- Communication steps with the membership and public generally handled by the President.

Results: Initial steps have been made in the development of all of the documentation mentioned. While work still needs to be done in each area, we have sufficient documentation of the operational procedures and processes to conclude that good progress was made in each area. Work on this objective will continue in 2025. The final result will be a BHS Policies & Procedures Manual.

Objective 3: Broaden Our Approach to Attract New Members and Retain Current Members: Maintaining and growing our membership roll is an essential component for the future of BHS. Membership dues and donations are a primary source of our operational funding. When the museum is open, we will need to have a solid cast of members to support the museum. To that end, we should be exploring ways to:

- Market BHS to a broader audience, regardless of age
- Demonstrate how BHS is a community asset worthy of their membership
- Provide members with volunteer opportunities
- Provide opportunities for members who are from outside our area to actively engage in BHS, so, for example, they can view our presentations, see the museum from afar or watch a topical program on our local history.

Results: The opening of the museum has, by itself, been a significant marketing tool for the growth of our BHS membership. We have seen many non-member donors convert to being members, several former members have now reengaged with new memberships, and a number of new members have joined BHS. Still we need to work at getting news of membership opportunities out beyond our current sphere of members. We have started work on broadening our volunteer program. More work will be done on this objective in 2025. The engagement of BHS members from outside our area is where we did not meet the intent of our objective. Time focused on the museum completion and the challenges of engaging a college age consultant contributed to this shortfall. This will be a 2025 objective.

Objective 4: Establish a List of Future Historical Topic Research Projects: As we noted in our November 2022 BHS Board meeting, there are many topics for which we have only some information or others no information at all. In this objective, we will compile a list of topics that could be open for new or additional research. This would be an ever-evolving list with new topics added at any time and topics where research is completed removed from the list.

Results: We have developed lists of research topics and begun work on some of the “easier” objectives in that list. At this point, we need to engage more volunteers, train them in historical research, and carefully manage the list of topics being worked on at any one time.

## 2025 BHS Objectives

As we write this 2024 BHS Annual Report, we note that several of the 2024 objectives were not completed to their full extent. The key objectives for 2025 will be:

1. Broaden Access to the Bartlett Historical Society: Implement online PastPerfect, engage in a second social media platform, establish a BHS YouTube channel
2. Build an Effective BHS Volunteer Program: Identify volunteer opportunities, build a training program, develop a volunteer recognition program
3. Activate a Historical Research Program: Add to our list of topics needing further research, develop a training program for research assistants, create a repository for completed research project documentation
4. Network with Other Historical Societies and Non-Profits: Reengage the meeting of regional historical societies, participate in a state wide summit involving non-profits, institute a local history program with the Josiah Bartlett Elementary School, engage with the Bartlett Public Library in a cross support program for local history, develop stronger ties with the leadership of Bartlett and Hart's Location
5. Strengthen Our BHS Operational Procedures and Practices: Continue development of BHS Policies and Practices documentation.

### BHS Four Season Photo Raffle

2024 marked a change in our raffle prize for the year. Instead of a quilt, we chose to raffle four seasonal framed photographs taken and donated by Phil Franklin, BHS President.

The four photos are from Bartlett and neighboring area showing depictions of spring, summer, fall, and winter in the White Mountains. They were framed by a local framing shop (costs donated by BHS members).

This year, our BHS raffle fundraiser brought in about \$550 in ticket receipts.

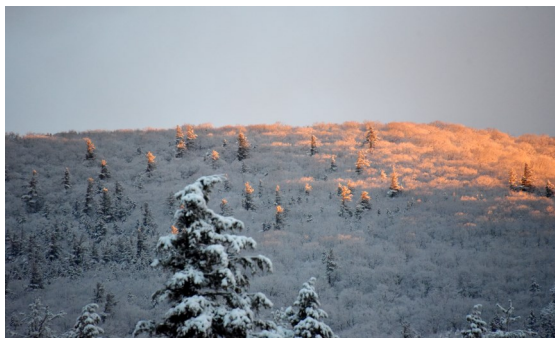
In total, our four raffles have raised about \$3,550 for BHS. Our thanks to all of the people who purchased raffle tickets.



Summer—A bend in the Saco River, with Hart's Ledge & Mount Hope against a Blue-Bird sky



Spring—A Lupine covered meadow with Cannon Mountain in the distance



Winter—Early morning sun lights the snow covered face of Cave Mountain



Fall—Looking across an artist's palette of color at Mount Tremont

# **Bartlett Historical Society and Museum – Our Strategic Project**

## **Completed!!**

2024 marked the completion of a nine year project to save, renovate, and transform the historic former St. Joseph Church in Bartlett into our historical society museum and headquarters. On October 19<sup>th</sup>, a grand opening celebration was held to welcome the public into the “new” building. Our vision to create a museum to display the history of Bartlett, Hart’s Location, and Livermore is now a reality.

### **History of the Former St. Joseph Church Building**



Beautiful, one-of-a-kind stained-glass window catching the morning sun from the east

The St. Joseph Church was built in 1890 under the direction of Father J. N. Plante who, at that time, was serving the Diocese of Manchester in the Whitefield, NH community. St. Joseph became the first Catholic church in the Mount Washington Valley. It was in service as a church until 1999 when the Diocese launched a project to consolidate churches in the area and, so, the St. Joseph parish was consolidated into Our Lady of the Mountains Church in North Conway.

The Bartlett School District purchased the building and ultimately used as a storage facility for the Josiah Bartlett Elementary School. Little to no maintenance on the building caused its condition to deteriorate to the point that the school district proposed its demolition, three times. Concerned citizens stepped in and gained agreement with the Bartlett School Board to let an exploratory committee identify an alternate use for this historic building. Ultimately, the Bartlett Historical Society became the stewards of the building in June 2016 with the stated goal of reopening the building as a museum after an extensive renovation. BHS purchased the building in November 2019 for \$1.00 and started the renovation the same month. Fundraising for the project started in November 2016 and concluded in spring 2024.

### **Appreciation of Our General Contractor, Bill Duggan**

This project was managed by Phil Franklin, BHS President, and, more importantly, by Bill Duggan, our General Contractor. Bill is a Bartlett contractor with over 40 years of experience in the construction trades. We owe a great deal of thanks and expression of appreciation to Bill for his expertise in engineering and rebuilding of the structure plus coordination of sub-contractors. Because of our “start/stop” work arrangement due to funding, Bill adjusted to this on again, off again work pace, something no other contractor would likely do. We extend our thanks to Bill for his expertise and commitment to this project.

### **2024 Renovation Summary**

Between the latter part of 2023 and the beginning of 2024, the pace of funding donations increased dramatically. The major component of outstanding work at the beginning of 2024 was the installation of all of the interior trim work (e.g., all interior doors and casings, window casings, wainscoting, chair rail, interior ramp and railing, baseboard, etc.). This work required a skilled craftsman and Bill Duggan fit that bill. Because the building is 134 years old, very little of the building is square, rather, things such as the original floor “wave” requiring scribing of all baseboards. The same was true of nearly all other components of the building. The results of the trim plus other work to close out the renovation has left BHS with a remarkable site that is best described by the reaction of visitors—“WOW!”

Accomplishments aside from the major effort to install the interior trim in 2024 included:

- The complete scraping, sanding, cleaning and repair of the entire original 1890 floor along with the brush painting of that floor (work done by a BHS volunteer)
- Installation of vinyl plank flooring in four areas of the building (i.e., front foyer, back exit hallway, lavatory, Curator’s workspace) (work done by two BHS volunteers; plank flooring was also donated)
- Completion of HVAC and plumbing details
- Cleaning, repair, repair and painting of a set of donated display cases

A detailed list of the project completed in the 2024 Work Efforts Completed section of this report.

Looking back over the past years, we have taken a building that was nearing a state of collapse and brought it back to a new life in Bartlett. The work done to save this building is considered by many to be nothing less than monumental given the state of the structure at the outset of the effort.

Note: *This will be the last year of reporting for this section of the Bartlett Historical Society Annual Report.*

## 2024 Work Efforts Completed

Following a very busy 2024, renovation activity focused on the following sub-projects. Aside from these detailed headline projects, several smaller projects were completed, all by volunteer support. Details on the headline projects are below (the “Capitalization” column with a “Yes” or “No” indicates if the work completed added tangible monetary value to the structure) (GIK = Gift-In-Kind):

Throughout the year, Bill Duggan and Phil Franklin met regularly to review the project plans, next steps, and budget. Their coordination efforts have helped keep the project on track, eliminated expensive rework and set targets for the next major steps in the renovation.

Project	Impact	Cost	Capitalization
Plank Flooring Installation	Vinyl plank flooring was donated to BHS for the museum building by a member from Massachusetts who is in the flooring business; Two BHS members installed the flooring in the foyer, back exit hallway, lavatory, and Curator's workspace..	\$0	Yes
Painting the Museum Floor	The original 1890 floor of the former church was kept as a part of the museum. This floor was scraped, cleaned, repaired, sanded, and painted by a BHS volunteer. The paint for the effort was also donated by another BHS member.	\$0	Yes
Completion of the Interior Painting	A first coat of paint was applied to the museum walls by two BHS volunteers. However, the second coat of paint and all of the detailed finish painting was contracted to a local painter.	\$20,206	Yes
Finish Plumbing Work	All of the finish plumbing work for the installation of the lavatory was completed.	\$3,901	Yes
Bookcase & Closet Shelving	A BHS volunteer designed and built all of the closet shelving and library bookcases for the museum building. The only cost was for materials.	\$1,800	No
Back Exit Door Stairs	Two BHS volunteers built the exterior stairs for the back exit door from the building. The cost was only for materials.	\$1,588	Yes
Road Sign	A new road sign was installed at the front of the museum building reading “Bartlett Historical Society and Museum”	\$5,850	Yes
HVAC Finish Work	Some additional finish work was required to complete the HVAC installation.	\$1,446	Yes
Interior Trim Installation	A great deal of time was required to install all of the interior trim work in the building. This included items such as doors and door casings, window casings, baseboard, wainscoting and chair rail, stained-glass window light boxes, etc.)	\$47,696	Yes
Numerous Other Details	As with any major renovation or building project, there is a punch list of small items that need to be handled. That was true for this renovation project. These items are not listed here due to the number of items and fractional associated costs.		No

## Renovation Open House Event

In addition to the work on the building, we opened the building for a “Renovation Open House” event on July 4, 2024 (coinciding with the July 4<sup>th</sup> parade and post-parade town picnic). The event was very well attended with about 105 people stopping by to see the progress. We received very positive comments from everyone who attended. This was the last open house before the museum opening.

## Museum Set Up

A considerable amount of work was done by BHS volunteers to get the museum ready for the grand opening on October 18<sup>th</sup> and 19<sup>th</sup>. This included cleaning, repair and painting of donated display cases, centralizing all of the items in the BHS collection, selecting, organizing and setting up display items, and overall getting the building ready for the grand opening.

## Renovation Funding

All the work on this project is being made possible by the generous donations of individuals, businesses, and foundations. Additionally, some “gift-in-kind” and significant amount of volunteer work helped advance the renovation effort at no cost to the historical society. An important note is that throughout the project, BHS held fast to our policy of scheduling and performing work on the building only when we had the funds to complete the that piece of work. While this forced the project to take longer to complete, we are debt free as we opened the building.

## Individual and Business Funding

The generosity of individuals and business from near and far continues to be overwhelming. In 2024, we received \$49,672 in museum donations bringing our total donations to \$641,890. We also were the beneficiary of some gift-in-kind and volunteer support that helped save several thousand dollars in funds while getting work accomplished toward the completion of the renovation.

## 2024 Museum Renovation Grant Report

In 2024, we were fortunate to secure the following grant funding for the museum renovation:

- The Robert and Dorothy Goldberg Charitable Foundation has been particularly generous with their funding. In 2023, they granted \$5,000 in unrestricted funds to the project and in 2024 another \$4,000 that we applied to operational needs. Over the previous five years, this foundation has granted a total of \$35,500 toward the museum project.
- New Hampshire Charitable Foundation, in 2022, the NH Charitable Foundation awarded BHS funding for a three-year unrestricted operational grant. The approval was received in 2022 but the first check was received shortly after January 1, 2023. The grant will be paid out as follows:
  - ◇ 2023 - \$8,000 (funding received; applied to 2023 museum renovation expenses)
  - ◇ 2024 - \$9,000 (funding received; applied to 2024 museum renovation expenses)
  - ◇ 2025 - \$10,000 (funding received; applied to BHS Operational Account)

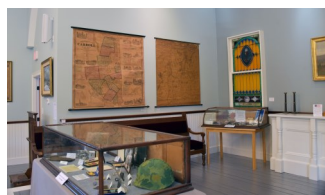
These funds allow us to free up operational funds and transfer them to the museum project.

We also received several other smaller grants from private, donor-advised foundations.

## Bartlett Historical Society and Museum—Grand Opening

On the weekend of October 18<sup>th</sup> celebration events were held to mark the grand opening of the museum. October 18<sup>th</sup> was an invitation only event for top level donors of the museum. October 19<sup>th</sup> was the public grand opening. October 20<sup>th</sup> was another public open house day with no ceremony. In total, we had about 135 guests attend the events and the response to the building and museum was overwhelmingly positive from all.

## Museum Photos With Displays Installed



# Museum Opening Celebration



Phil Franklin, BHS President, was the main speaker at both the Friday and Saturday events. Bill Duggan, Renovation General Contractor, also added a few impromptu words on Friday evening. On Saturday, Andrew Cushing, Field Representative from the NH Preservation Alliance, and Norm Head, BHS President Emeritus, also addressed the audience.

## **Financial Reports**

In 2024, the Bartlett Historical Society managed its day-to-day operational activities from an account that we have termed as an “Operational Account.” We have managed our strategic project for the Bartlett History Museum out of a separate account known as the “BHS Museum Fund.” For accounting purposes and complete transparency in our financial records these two accounts are never mixed and, in fact, are with two separate banks. At the start of the museum project, the BHS Board of Directors established the following policies to guide our management of these accounts (these policies are still in place— through the end of 2024). [Note: Changes to the financial policies will occur in 2025 as any left over funds in the BHS Museum Fund will be merged into the Operational Account.]

### **Operational Account**

Operational Income: Income to the Operational Account is currently derived from the following sources:

- Membership dues
- Donations designated to the General Operational Account
- Designated fundraising events and promotional activities

Operational Expenses: Expenses covered from the Operational Account are typically:

- All standard BHS administrative office expenses (e.g., printer ink, paper, other office supplies, etc.)
- Insurance premiums
- Newsletter printing and postage including envelopes (supplemented by newsletter sponsor donations)
- Professional non-profit support organizational membership dues
- Museum building operational expenses (e.g., water bills, electric bills, heating fuel bills, etc.)
- Museum building maintenance
- Bartlett antiquities purchased (if any)

BHS is a completely voluntary organization; therefore, we do not have any salary expenses for any volunteers including members of the BHS Board of Directors

### **Museum Renovation Fund**

Renovation Income: Income to the Museum Fund is derived from the following sources:

- Donations designated to the BHS Museum Fund and all undesignated donations to the society
- Foundation Grants designated to unrestricted or specific restricted renovation activities
- Designated fundraising events (e.g., dining benefits events, raffles, charitable gaming, etc.)

Renovation Expenses: Expenses paid from the Museum Fund are:

- All work (labor) for the renovation project (i.e., general contractor, sub-contractors)
- Materials for renovation activities in the museum building
- Permits
- Engineering inspections
- Museum fundraising costs.

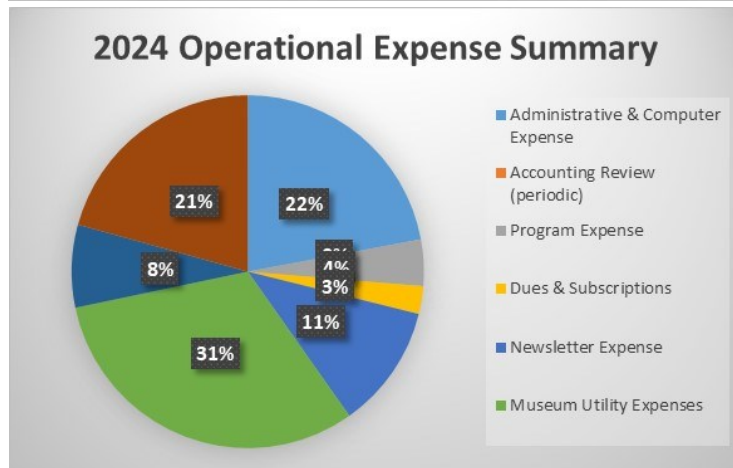
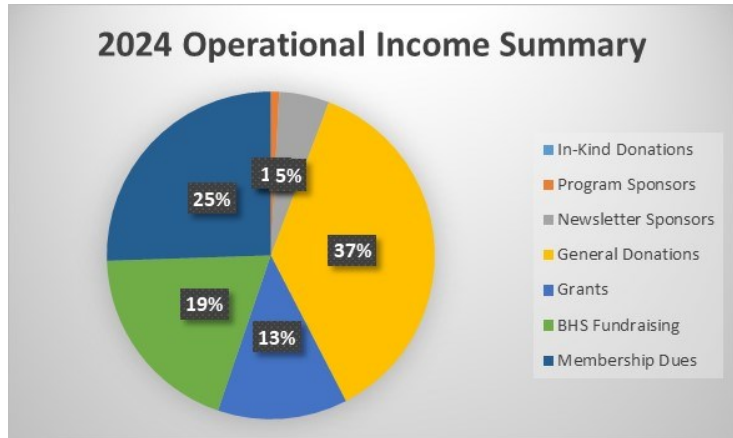
### **Financial Summaries**

The following pages will provide a view into the Operational Account and BHS Museum Fund accounting for the year 2024. BHS operational and museum records for 2018 and 2019 received a professional review in 2020 by the accounting firm Leone, McDonnell and Roberts of North Conway, NH. The CPA completing the review found no irregularities and saw no need for any additional documentation to substantiate the items recorded in our accounting books. We did not engage the CPA in a review in 2021, 2022, 2023, or 2024, however, we are planning to reengage with the firm in 2025 for another review of our operational and museum books as recommended by our accounting firm (as we are closing the BHS Museum Fund account and transitioning to one operational account with four distinct reserve funds for our expenses). This will occur after the 2025 CPA Review is completed. Any remaining funds from the BHS Museum Fund will be transferred into the BHS Operational Account.

## 2024 Operational Account Summary

The BHS Operational Account covers cost strictly associated with the day-to-day operation of BHS.

<b>2024 Operational Account Income Summary</b>	
Category	Amount
In-Kind Donations	\$ -
Program Sponsors	\$ 300
Newsletter Sponsors	\$ 1,800
General Donations	\$ 13,303
Grants	\$ 4,650
BHS Fundraising	\$ 6,994
Membership Dues	\$ 9,270
<b>Total Income</b>	<b>\$ 36,317</b>
<b>2024 Operational Account Expense Summary</b>	
Category	Amount
Administrative & Computer Expense	\$ 5,074
Accounting Review (periodic)	\$ -
Program Expense	\$ 976
Dues & Subscriptions	\$ 585
Newsletter Expense	\$ 2,610
Museum Utility Expenses	\$ 7,244
BHS Fundraising	\$ 1,741
Insurance Expense	\$ 4,761
<b>Total Expense</b>	<b>\$ 22,991</b>
<b>Net Income</b>	<b>\$ 13,326</b>
Starting Balance @ Jan 1 2024	\$ 22,268
<b>Operational Fund Balance Yearend 2024</b>	<b>\$ 39,430</b>



### General Note

In the latter part of 2024, we started the close of the museum project and made plans to transition all museum income (if any) and expenses to the operational account following the completion of the accounting review in early 2025.

### Income Notes

There was a tremendous jump in individual donations to BHS especially toward the end of 2024. Donations represented 37% of our income followed by 25% from membership dues (membership rose by 8% in 2024), and BHS fundraising at 13% of our income (mostly from the golf tournament). Overall, we closed 2024 with a very positive financial outlook for BHS. As we enter 2025, we are establishing four account sub-headings under the Operational Account. They are: 1. General Operations; 2. Building Maintenance Reserve; 3. Collections and Artifacts Reserve; 4. BHS Endowment Program. Funding for these accounts will help focus income and expenses in more defined ways.

### Expense Notes

Operational Expenses saw significant increases in three categories in 2024—Administrative expenses rose by 25% largely due to retail cost increases and added museum expenses; Utilities rose by 45% due to the increased use of the HVAC system (i.e., electricity & propane) as the building was coming online full time; Insurance rose by 40% due to our former carrier, The Hartford, non-renewing our coverage and the added premium cost from the new carrier, Hanover Insurance, for property & liability coverage as well as Directors & Officers Liability coverage. All of these cost increases were essentially “dictated” to us as prices across the markets where we need to purchase services have continued to rise and we have seen more full time use of the museum building.

We will continue to take whatever steps we can to contain our costs such as regulating the temperature of the building for heating and cooling during hours of operation (as well as when the museum is closed) and finding bargain pricing for office supplies and materials.



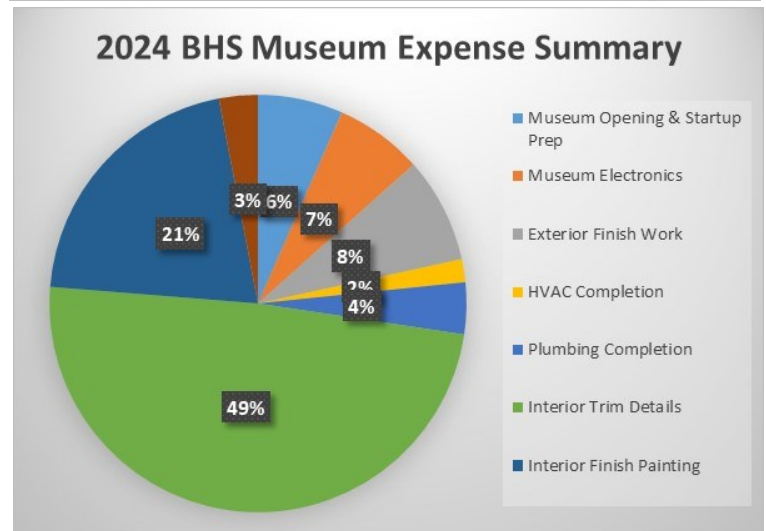
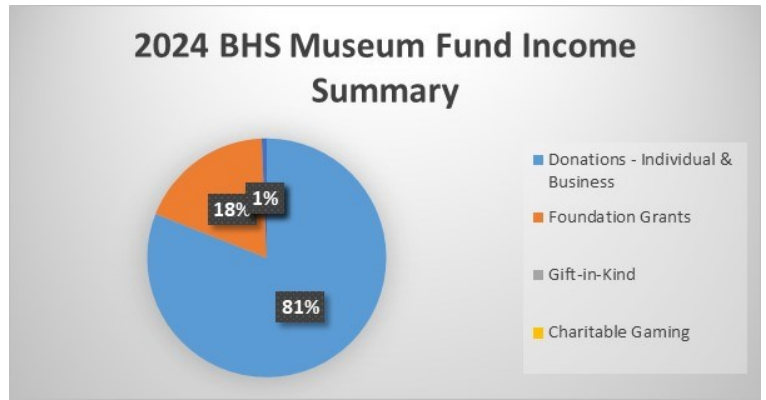
## 2024 Museum Fund Summary

The BHS Museum Fund is designated strictly for museum renovation income (donations) and reconstruction expenses.

<b>2024 BHS Museum Fund Income Summary</b>	
<b>Category</b>	<b>Amount</b>
Donations - Individual & Business	\$ 40,235
Foundation Grants	\$ 9,100
Gift-in-Kind	\$ -
Charitable Gaming	\$ -
Miscellaneous Donations	\$ 337
<b>Total Income</b>	<b>\$ 49,672</b>

<b>2024 BHS Museum Fund Expense Summary</b>	
<b>Category</b>	<b>Amount</b>
Museum Opening & Startup Prep	\$ 6,436
Museum Electronics	\$ 6,647
Exterior Finish Work	\$ 7,977
HVAC Completion	\$ 1,735
Plumbing Completion	\$ 3,901
Interior Trim Details	\$ 47,696
Interior Finish Painting	\$ 20,206
Office Furniture & Cabinetry	\$ 2,933
<b>Total Major Renovation Expense</b>	<b>\$ 97,531</b>
<b>Starting Balance 01/01/2024</b>	<b>\$ 119,713</b>
<b>Ending Balance 12/31/2024</b>	<b>\$ 71,854</b>

<b>Total Capitalized Renovations to Date</b>	<b>\$ 508,611</b>
<b>Total Donations to Date</b>	<b>\$ 641,890</b>



### Income Notes

Most of our income for the museum renovation comes from donations from private individuals and businesses. An important source of funding, aside from these two sources, is grant funding via foundations. As we started 2024, we were carrying over a substantial amount of cash in our checking account for the museum. This carry over plus another very positive year of donations allowed us to fund the work to complete the museum renovation project.

While donations from Individuals and Grant numbers were down from 2023, we were also pulling back on the solicitation of these funds by mid-year, we felt we had sufficient funds to complete the project. The funds we did receive plus the carry over left us in a solid position for engaging contractors in the remaining checklist items. Added to this, our General Contractor made a substantial reduction in his charges to BHS for the completion of the interior trim work. In essence, this was a “gift” to the historical society from him. This reduction of just over \$27,400 from the trim estimate has helped us fund our Building Maintenance Reserve. There are a couple of minor checklist items that we are carrying over to 2025 but they will result in less that \$5,000 in spending.

### Expense Notes

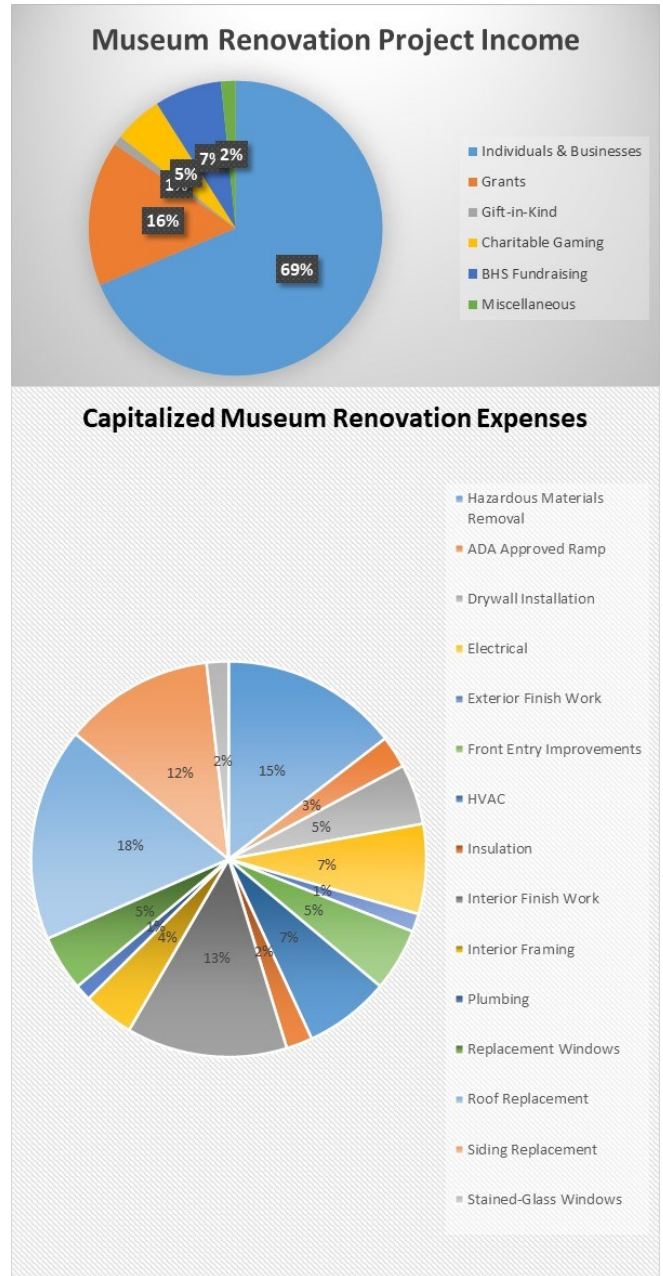
As noted in other parts of the Annual Report, at year end, we are now occupying a fully operational museum and headquarters for the historical society. Expenses for 2024 represent the final stages of work to be completed plus costs related to the preparations for opening the museum found under the Museum Opening & Startup Prep and Office Furniture & Cabinetry categories. As expected, most of our costs for 2024 on the museum project were focused on the installation of the trim work throughout the museum while a smaller percentage was focused on exterior details.

This will be the last report for the Museum Fund. A summary report for the entire museum project is on the following page.

## **Bartlett Historical Society & Museum—Total Building Renovation Summary**

The BHS Museum Fund is designated strictly for museum renovation income (donations) and reconstruction expenses.

Total Project Income	Amount	
Individuals & Businesses	\$ 441,063	69%
Grants	\$ 102,188	16%
Gift-in-Kind	\$ 6,514	1%
Charitable Gaming	\$ 34,324	5%
BHS Fundraising	\$ 47,390	7%
Miscellaneous	\$ 10,411	2%
<b>Total - Project Income</b>	<b>\$ 641,890</b>	<b>100%</b>
Total Project Expenses	Amount	
<b>Capitalized Expenses</b>		
Hazardous Materials Removal	\$ 74,000	13%
ADA Approved Ramp	\$ 13,382	2%
Drywall Installation	\$ 25,200	4%
Electrical	\$ 37,386	7%
Exterior Finish Work	\$ 7,493	1%
Front Entry Improvements	\$ 26,178	5%
HVAC	\$ 35,575	6%
Insulation	\$ 10,929	2%
Interior Finish Work	\$ 66,928	12%
Interior Framing	\$ 21,057	4%
Plumbing	\$ 6,796	1%
Replacement Windows	\$ 23,112	4%
Roof Replacement	\$ 88,890	16%
Siding Replacement	\$ 62,539	11%
Stained-Glass Windows	\$ 9,145	2%
<u>Total -Capitalized Project Expenses</u>	<u>\$ 508,610</u>	<u>90%</u>
<u>Non Capitalized Expenses</u>	<u>\$ 54,831</u>	<u>10%</u>
<b>Total - Project Expenses (Cap &amp; Non-Cap)</b>	<b>\$ 563,441</b>	<b>100%</b>
<b>Estimated Cost Savings - Volunteer Work</b>	<b>\$ 75,500</b>	
<b>Total Project Cost with Volunteer Savings</b>	<b>\$ 638,941</b>	



### **Income Notes**

This project was largely funded through the generosity of individuals and businesses from near and far. However, we must also highlight the generosity of several public and donor advised foundations. In particular, we note the Robert and Dorothy Goldberg Charitable Foundation, the Kendal C. and Anna Ham Charitable Foundation, and the NH Charitable Foundation for their combined overwhelming support.

### **Expense Notes**

Several very costly items highlight the list renovation activities but given the terrible condition of the building at the start of the project, all were essential. The hazardous materials mitigation, replacement of the entire roof structure, and work done on the front foyer of the building saved the building from collapse. Installation of all new mechanical systems in the building was also a critical renovation step. Our General Contractor was very generous with his time and absorbed many costs. Finally, the work of volunteers saved several thousands of dollars making the project affordable.

## **Organizational Affiliations**

The Bartlett Historical Society is aligned with civic, historic preservation, or non-profit support organizations. Each affiliation has a specific purpose from which BHS derives a benefit. For example, through our affiliation with the New Hampshire Preservation Alliances, we have been offered sound advice on how we should proceed with our renovation activities to balance the need for replacement of components of our historic building versus repair of those components. The Mount Washington Valley Promotions organization run by Lisa DuFault from Bartlett is a great support in getting announcements of our programs out to the public plus has offered BHS television spots to allow us to promote our museum effort. Other organizations such as the New Hampshire Center for Non-Profits offers online webinars and seminars covering topics such as how to promote our organization.

Each year, as memberships come up for renewal, the BHS Board of Directors evaluates the support provided by the affiliated organizations, the cost of membership and benefit we perceive we are receiving through that membership. A conscious decision is made on whether to renew with the affiliation or non-renew our membership.

The organizations listed in the chart below are the ones with which we are currently aligned.

<b>Affiliation Category</b>	<b>Affiliation Organization</b>
Historic Preservation	NH Preservation Alliance
	Association of Historical Societies of New Hampshire
	New Hampshire Historical Society (via Board members)
	American Association for State and Local History
Civic Groups	Mt Washington Valley Chamber of Commerce
Non-Profit Support	New Hampshire Center for Non-Profits
	Mount Washington Valley Promotions

# **Bartlett Historical Society**

## **2024 Annual Report**

### **Appendix**

The Appendix section of this report contains additional information that the reader may find useful.

Appendices are:

1. Appendix A— BHS Non-Discrimination Policy
2. Appendix B— 2024 BHS Membership
3. Appendix C— Museum Fund Donors

## **Appendix A—BHS Non-Discrimination Policy**

### **Bartlett Historical Society Non-Discrimination Policy**

The Bartlett Historical Society is a 501 (c) 3 non-profit organization whose sole purpose is the collection and preservation of artifacts related to Bartlett history and the history of the surrounding region plus offering educational opportunities to *anyone* who is interested in learning more about this history. We are open to the public, so to speak.

As such, this organization does not and will not discriminate on the basis of race, creed or religion, color, gender expression, age, national origin or ancestry, disability, marital status, sexual orientation or military status, in any activities or operations. These activities include, but are not limited to, the appointment of or termination of members of our Board of Directors, hiring or firing of staff or contractors working for the organization, selection or deselection of volunteers, selection of vendors, and providing of services.

Adopted by the BHS Board of Directors: 10/15/2019

Next Review Date: 12/2025

Philip Franklin  
President, Bartlett Historical Society

## **Appendix B—2024 BHS Membership**

George Abbott	Joanne Corcoran	Robert Galligan
Ruth Abbott	Richard R Covill	Doug & Vicki Garland
Pamela Abbott	Frances F Cox	Larry Garland
Craig Abbott	Dave & Francine Cronin	Jack & Susan Gay
Fred Ainsworth	Myles & Christine Crowe	Barbara George
Cheryl Alander	Debra & Kenneth Crowther	Greta George
Frank & Nancy Alberto	Paula Dalton	Deborah Gilmore
Albert P. Alex	Diane & Neil Darcy	Robert J. Girouard
Richard & Diana Allen	Rebecca DeGeorge	Judie Glotzer
Richard Altenbern	George & Flory Denhard	Howard & Beverly Glynn
Andes Ski Shop, Tim Jackson	Brian A. Doherty	Richard J. Goff
Charles & Diane Arachy	John Doherty	Sharon Gogan
Doug & Candy Armstrong	Chris & Gail Doktor	Janet & Tom Gorman
David Atchason	Eileen Donnelly & Jeffrey Klay	Paula Graham
Donald Aubrecht & Mary Nodine	Kathleen B Donovan	Kathleen Guinee
Vincent & Marcia Bailey	Chuck & Linda Donovan	Harold F Hadden
F. Michael Bannon & Susan D. MacIver	David Dorsett	Carol Haney
Ellen Bates	Paul Doucette	Paul & Vicki Harlow
Patricia Belcik	Henry & Linda Dresch	Bruce & Sharon Hasfjord
Christine Benoit	Roland & Bette DuBois	Peter & Stefi Reed Hastings
Keven Blanchette	Bill Duggan	Jim & Linda Hastings
Steven Blum	Judith Duran	Ellen Hayes
Josh Boldebook	Diane Durante	Carroll & Nancy Hayes
Robert Bond Jr.	Jane Dusza	Richard Hazelton
Anne & George Bordash	Robert & Paula Duva	Marion Hazelton
Carla R Borstel	Ed Ecclestone	Mary Ann Head
Arthur & Suzan Boucher	Gretchen Ecclestone	Norman Head & Kathleen Sullivan Head
Carolyn Johnson Boyle	John Egan	Kathleen Sullivan Head, Realtor
Edward & Gale Bradbury	David Eiermann & Meghan Simone	Rick Hennessy
Luke & Pat Brassard	David Eliason	Paul Hennigan
Myra & Larry Brodney	El Reparó Glen, LLC.	Jim Higgins
Allen & Joanne Brooks	Lone Ellen Emery	Patricia & John Higgins
Kristin Brown	Benjamin English Jr.	Ray Hodgkins
Roger Burdwood	Bill Fabrizio	Nancy Holmes
Paula & Charles Burnett	Ruth Ann Fabrizio	Kathleen Howard
E. G. Chandler	Richard & Mary Ann Famiglietti	George Howard
Gene Chandler	Debra & Austin Ferland	Iron Mountain Water Services, LLC
Lloyd Chandler	Margaret Fish	Kevin & Susan Joyce
Michael & Hannelore Chandler	Katherine Fish	Stephen & Mary Kandrotas
John & Jeanne Chanley	Dan Fish	Jack Karp
Sue Ann Chula	David Flynn	John & Cheryl Keator
David & Susan Clark	Robert Foppiano	Edward & Patricia Kelly
Norman M & Barbara A Clement	Linda & Mike Francis	Judy & Dan Kennedy
Coleman Rental and Supply, LLC	Linda & Sam Frank	Irene E. Kerr
Paul & Jean Conley	Mary Franklin	William Kershner
Jackie & Tom Connors	Phil & Sue Franklin	Pat & Michael Keys
	Dennis & Vicky Gallagher	Gary Kezerian

## **Appendix B—2023 BHS Membership** (continued)

Dave & Colleen Kilfoil	Walter Nadeau	Stephen & Wendy Scribner
William J King	Thomas Nealley	David Shedd
Julia & Bob King	North Country Fair Jewelers	Dan Sheehan
Stacey Klimkosky	Mary Nudd	Theresa Sherlock
Eric & Donna Korb	Gail C Olsen	Nancy Shook
Kringle's Enterprises, LLC	Scott & Gladys Olson	Brian J Spero & Michelle Manning Spero
Keith & Barbara LaFrance	John W O'Neil	Paul & Lorraine Squatrito
Lydia Lansing	Gregory Orzoloek	Robert & Patricia Sterling
George & Joyce Larson	Robert & Marion Owen	Ruth & Tyler Stevens
Richard Leavitt	Gail Paine	Kim Steward & Keith Force
Jason Lebel	Pam & Steve Pamer	Elois Sullivan
Judy & Ed Legan	Patch's Market	Carol Swanson
Diana Levy	Alice Pepper	John Swayze
George & Virginia Lewis	Chris & Vicki Perley	Clare Swayze
Pauline Lombardi	Robert C Pettengill	S. D. Szetela, LLC
A.O. Lucy	Donald Phillips	Irene Szymanski
Lucy Hardware	Richard M. Plusch Antiques	Patricia & Joseph Talty
John & Judy Ludgate	Anna Marie Polcari	Michael Tamulis
Dennis Lufkin Drywall	David & Pat Pomeroy	Joy Tarbell & Eddie Minyard
Joanne Lufkin	Gail Prelli & Charles Bierce	Paul Taylor
Patricia Luke	David A Publicover	Douglas & MaryAnne Taylor
Jack & Mary Mahany	A.H. "Buzz" & Jane Query	Mary & Brad Thayer
Dennis Maiorino	Ken Rancourt	The Berry Companies, Joe Berry (AMSCO)
Paul & Heidi Malachowski	Betsy A Rand	The Seasons, Glen
Scott & Linda Mallett	Toby & Stephanie Roberts	True North Veterinary Hospital
Joe Malone	Debra & Gordon Robinson	Ryan Thurman
Judy & Mike Manzo	Brian Rogers & David Jones	Barb Treadway
MattyB's Mountainside Cafe	Patsy Rogerson	Kathy Van Deursen
Suzanne Mc Auliffe	Carol Rosseland	Laura & Peter Villaume
Mike McCluskey	Martha Rounds	Margaret Vincent
Ann J. & Bob McGraw	Wayne Ruggles	David & Marilyn Wajda
Brenda & Earl Medeiros	Ellen Russell	William & Marie Walsh
Gail Mender	Elaine Ryan	Barry Ward
Louise Merrill	Sal & Lori Santamaura	Michael Webb
Lorna C Mersereau-Basford	Tom & Sue Santeusanio	Martha Weida
Art & Bev Micallef	Carol Saunders	White Mountain Oil & Propane
William & Maureen Miller	Glenn Saunders	White Mountain Stove Shop
Paul Miraglia	Sonni Saunders	Mike Wiley
Henry Mock	Joan & John Scanlon	Thomas & Janet Wing
Mary Ellen Moffitt	Jennifer E Scanlon	Edward Wolcott
Jean Mollicone	Jay Scanlon	York Land Services, LLC
Maureen Monks	Deborah Scanlon Walsh	Kenneth C Wyman
Robert Moran	Fred & Sandi Schaaff	Charlie & Arlene Zaccaria
Mountain Valley Auto, Rachael Brown	Susan & Jay Scheuer	
Stephanie Mullins	Arden Schoen	
Sylvia & Richard Munyon	Leslie & Warren Schomaker	
Dave & Meg Murphy	Robert & Suzanne Scolamiero	

## **Appendix C — BHS Museum Fund Donors**

The following pages contain a list of all of our museum donors since the inception of the museum campaign (by giving level in the Capital Campaign).

### **Platinum**

\$35,000 +

Phil & Sue Franklin  
Robert & Dorothy Goldberg Charitable Foundation  
Mike & Peg McCluskey

---

### **Diamond**

\$25,000—\$34,999

Kendal C and Anna Ham Charitable Foundation

---

### **Gold**

\$10,000—\$24,999

Joe Berry	New Hampshire Charitable Foundation
Hadley Champlin & Anne Pillion	John & Joan Scanlon
Christopher Doucette	Warren & Leslie Schomaker
Richard Goff	White Mountain Oil & Propane, Inc.
Norman Head & Kathleen Sullivan Head	

---

### **Silver**

\$6,000—\$9,999

Anonymous (3)	George Howard
Barbara & William Denhard	Our Lady of the Mountains Church
Benjamin & Barbara George	Janet S Swanson & Louis Sgarzi

---

### **Bronze**

\$3,000—\$5,999

Anonymous (2)	Maddison Family Trust
Kathleen & H. Edmund Bergeron	Prisca & Kim Marvin
Michael & Hannelore Chandler	Henry P. Mock
David Eliason	NH Preservation Alliance
Austin & Debra Ferland	Gail F. Paine
Bert & Greta George	John & Alice Pepper
Kathleen Howard	Richard & Prudence Plusch
Michael & Patricia Keys	Diane & George Swansburg
George & Virginia Lewis	Martha Weida



## **Appendix C — BHS Museum Fund Donors** (continued)

### Copper

\$1,500—\$2,999

Anonymous (1)	George & Louise Merrill
Myra & Larry Brodney	Joseph & Lucille Russo
George & Flory Denhard	Raymond & Arden Schoen
Richard & Marion Hazelton	Brian J & Michelle Manning Spero
Henney Historical Fund, Dennis Sullivan	S.D. Szetela, LLC
Patricia & John Higgins	Irene Szymanski
Lydia B Lansing	Howie & Sue Wemyss
David & Jeanne Mason	Burke York - York Land Services, LLC

---

### Pewter

\$1—\$1,499

George & Ruth Abbott	Christopher Bellis	Barbara A. Bush
Craig Abbott	Martha Benesh	Terese A Byrne
Virgill Abbott & Judyth Allen	Lydia Bennett	Lynn & Leslie Cannon
Accu Temp Services Inc.	Christine Benoit	Scott & Linda Carlyle
David & Cheryl Alander	Roger F Berry	Kenneth D. Carpenter
Francis & Nancy Alberto	Beth A. Carta-Dolan/Joseph's	Gerry & Del Carrier
Karen Allan	Spaghetti Shed	Brendan & Veronica Carroll
Richard & Diana Allen	Gail Prelli & Charles Bierce	Leon Carson
Diana Levy	Big Plans, LLC	Chalmers Insurance Group
Alpine Title Services, Inc.	Black Cap Grille, LLC	Gene Chandler
Richard Altenbern	Jerry Blackwell	Lloyd Chandler
Robert H. & Martha A. Amidon	Keven & Colleen Blanchette	Leona Chandler
Andes Ski Shop	Steven Blum	Jeanne & John Chanley
Anonymous (22)	Robert L Bond	Joy Check
Charles & Diane Arachy	Brett Alan Booth	Kathleen Cheney
Doug & Candy Armstrong	Anne & George Bordash	Richard M Chrenko
David Atchason	Renaë Broderick & Douglas	Sue Chula
Donald Aubrecht & Mary Nodine	Bordewieck	Ralph & Rita Ciaramella
Karla Badger	Carla R Borstel	David & Susan Clark
Badger Realty	Arthur & Sue Boucher	Norman & Barbara Clement
Judith Bagrud	Paul Bouffard & Claire Bouffard	Richard & Jennifer Cogan
Evelyn R Bailey	Caroline & Joe Boyle	Jean & Paul Conley
Peter & Virginia Bailey	Edward & Gale Bradbury	Jackie & Tom Connors
Ernest & Sharlene Barbeau	Gloria & John Brennan	Dan & Liz Conrad
Darlene Barrett	Joanne & Allen Brooks	Elizabeth Conway
Bartlett Recreation Dept.	Rachael R Brown	Conway Daily Sun
Bartlett VFW	Michael Bruno	Conway Family Dental Care
Bartlett Village Water Precinct	Bobbi & Briggs Bunker	Conway Scenic Railroad
Ellen & Bruce Bates	Richard & Mary Burack	Joan Cope & Russell Brown
Kate Battenfelder	Roger Burdwood	Steve & Deb Coppola
Patricia A Belcik	Kevin & Judy Burke	Alfred Cote
	Paula & Charles Burnett	

## **Appendix C — BHS Museum Fund Donors** (continued)

Daniel & Kristine Coughlin	John Egan & Carol Rosseland	Glen Sand & Gravel Corporation
The Couillard Family Trust	David Eiermann	Judie Glotzer
Jody Couillard	Birdy Ellsmore	Richard & Joelle Goff
Country Cabinets etc., LLC	Emerald Tree Experts, LLC	Golden Apple Inn
Rev. Frances Fosbroke Cox	Cheryl & Robert Emerson	Janet & Tom Gorman- Gorman Family
Roxann Cox	Lone Ellen Emery	Carly Goss
Janice Crawford	Bill & Bonnie Estey	Paula & Mark Graham
Dave & Francine Cronin	Hattie Evans Grandchildren	Merle & Gloria Grant
Myles & Christine Crowe	William & Ruth Fabrizio	Anne & Scott Grant
Nancy Crowther	Richard E. Famiglietti	Kathy Grant
Kenneth & Debra Crowther	Philip Fecher	Sara B. Grant
Dean Crowther	Gail Ferreira	Great Glen Trails/Mt Washington Auto Road
David & Maria Crutchley	Ralph & Sally Fiore	Residential Mortgage Services-Randy Guida
Andrew Cushing	Margaret & Katherine Fish	Kathleen Guinee
Lou & Pat D'Allesandro	Rebecca Fish	Susan Haberek
Paula Dalton	Dan Fish	Miriam Habert, The Bartlett Inn
Katherine Darling	David & Gloria-Jean Fitzgerald	Harold Hadden, Jr.
Nancy & Dean Davis	Flatbread Company	George Hall
Glenda Davis	David & Janice Flynn	Anne Hall
Danise Davis	Marion T Forte	Carol Haney
Matthew & Jennifer DeAngelis	Linda & Mike Francis	Maureen Hanlon
DeGeorge Family	Linda & Samuel Frank	Betsy Harding
Joe & Jessica Dellavalla	Mary A. Franklin	Victoria Harlow
Kathleen Van Deursen	Stephen & Kimberly Franklin	Bruce & Sharon Hasfjord
Peter & Mary Deveau	Ryan & Trisha Franklin	James & Linda Hastings
Stephen & Denise Dinsmore	Andy & Anita Friedrich	Stefi & Peter Hastings
John C. Doherty	Carl & Judy Fuller	Lois Hatch
Brian Doherty	Gino & Beth Funicella	Carroll & Nancy Hayes
Eileen Donnelly & Jeffrey Klay	Marjorie Furlong	Ellen Hayes
Chuck & Linda Donovan	Peter Gagne	Mary Ann Head
Stan Dorsett	Dennis Gallagher	Tim & Stacey Head
David Dorsett	Robert Galligan	Bob Heiges
Thomas & Clare Doyle	Laurance Garland	Jane Hennessey
Hank & Linda Dresch	Nelita J Garland	Rick Hennessy
Lloyd & Diane Drew	Doug & Vicki Garland	Paul & Elaine Hennigan
LA Drew	Joel & Jean Garland	Ronald & Charlene Hibbs
Jo-Ann Driscoll	Elizabeth Garland	James T. Higgins
Roland & Bette DuBois	Charlie, Emily & Jack Garrard	Sarah Higgins
Deni Dufault	John & Susan Gay	Ray Hodgkins
Michael Dunn & Deb Moshier-Dunn	Florin & Radita Ghita	David P. Hogan
Judy Duran	Deborah G. Gilmore	Robert Holmes & Pamela Abbott
Diane M Durante	Robert J. Girouard	Nancy Holmes
Jane Dusza	Scott & Barbara Gleason	Benson Howard
Robert & Paula Duva	Glen Beverage Co.-Dale Richards	Diane Hutchinson
E. G. Chandler Inc	Glen Ellis Jellystone, Sun NG	Linda Lee & Doug Von Iderstein
Sally H Eastwood	Glen Ledge Corner Store	Jackson Historical Society
Gretchen & Ed Ecclestone		

## **Appendix C — BHS Museum Fund Donors** (continued)

Gary & Patricia Jaworski	The Lodoen Family	William & Maureen Miller
Mike Johansson & Tracey Tibbetts	Pauline Lombardi	Joy Tarbell & Eddie Minyard
Mark Johnson	Nancy & Jeffrey Lonstein	Paul Miraglia
Lorraine Jones	AO Lucy, Lucy Marketing & Maple	Ray Mitchell & Laura Riggs-Mitchell
William A Jones	Chester & Lydia Lucy	Mary Ellen & Charles Moffitt
Kevin & Susan Joyce	John & Judith Ludgate	Jean Mollicone
Anna Junge & Karen Junge-Dennison	Dennis & Carey Ann Lufkin	Maureen H Monks
Stephen & Mary Kandrotas	Joanne Lufkin	Michael Mooney
Cheryl & John Keator	Patricia Luke	Robert Moran
Brenda Keir	Kevin & Kay Lyons	Nancy Morrell
Walt & Cathie Keirans	F. Michael Bannon & Susan D. MacIver	Mt. Washington Radio & Gramophone, LLC
Cathie & Walt Keirans	Mark & Carol MacRae	Kathleen M Mulkern
Raymond & Nancy Kelley	James & Kathleen MacVarish	Stephanie Cannell Mullins
Edward & Patricia Kelly	Jack & Mary Mahany	Joan Munroe
Judith & Daniel Kennedy	Maine Health	Richard & Sylvia Munyon
Donna & William Kennedy	Dennis Maiorino	Dave & Meg Murphy
Irene E Kerr	Paul Malachowski & Heidi Wilson	Deanna Murphy
William Kershner	Scott & Linda Mallett	Walter J Nadeau
Gary Kezerian	Leslie Mallett	Joel & Gladys Nadel
David & Colleen Kilfoil	Joseph Malone	Thomas Nealley
Robert & Julia King	Gordon K Mann	Robert Nelson
Brendan King	Mike & Judy Manzo	William Nixon
Katherine King	Peter Marcoux	David Normandie
William & Carolyn King	David Marcus	North Conway Music Center
Sheila & Patrick King	Susan Mariano	North Country Dental
Mike & Doris Kirk	Richard Mariano	North Country Fair Jewelers LLC
Francis W Klay	Jon Marquis	Northeast Auto Body, Inc.
Joseph & Carletta Klementovich	Marshall Family Fund	Northeast Delta Dental
Stacey Klimkosky	Andrea Masters & Elaine Stockbridge	Northway Bank
Ellie Koepfel	Matty B's Mountainside Cafe	Ronald & Mary Nudd
Margaret O Kondrup	William J McAuliffe	David O'Connor
Francine Lampidis	McAuliffe Family	Michelle O'Donnell
James Lane	Philip McCarthy	Gail C Olsen
Philip & Pauline LaRoche	Eugene J. McCormack	Scott & Gladys Olson
Louis & Margaret Lavender	Robert & Julie McGowan	David & Sally Olson
Richard N. Leavitt	Joan & Ernie McGrath	Glenn A Olsson
Jason Lebel	Bob & Ann McGraw	John O'Neil
Roger Leblanc	Robert & Diane McGregor	Gregory Orzolek
Judy & Ed Legan	Elizah B McLaughlin Fund	A. Neil Osgood, II
Jeff & Martha Leich	Fay McLeod	Donna Osgood
Rich & Andrea Leonard	Eileen McManus	Robert Owen
Forrest Letarte	Robert McSheffrey	Michael & Catherine Pakaluk
Janna Levesque	Donald Medeiros	Andrea & Mark Palmstrom
Rosanne Levesque	Gale Mender	Pamela Pamer
Annette Libby	Arthur & Bev Micallef	Patch's Market, Inc.
Cynthia Otis Lindemeyer	Milford Flooring	Michael & Linda Peraino

## **Appendix C — BHS Museum Fund Donors** (continued)

Perley Family Foundation/Chris Perley	Sal & Lori Santamaura	Fred & Quinby Thompson
Mikell Perry	Sue & Tom Santeusanio	Christine & Bob Thompson
Chris Perry	Glenn & Sonnie Saunders	Tin Mine Carpentry-Marc S. James
Bruce Sather & Denise Peters	Carol Saunders	Barbara Treadway
Lise Peters	Michael & Kim Scanlon	Tri-State Plastic and Wood Modelers Club
Raymond & Sandra Pezzullo	Jay Scanlon	Tom & Cori Troon
Dave Phaneuf	Jenna Scanlon	Barry Trudeau
Donald F Phillips	Scanlon Lexus	Tracy Minnix & Anthony Tulip
Lee & Meg Phillips	Fred & Sandra Schaaff	Valley Originals
Joan & Dennis Pidherny	Jay Scheuer	Roland & Mary Vigeant
William Pilkington & Karen Carney	Gary & Catherine Scholl	Margaret Vincent
Anne & Frederick Pillion	Marisa Schumann	David S Wajda
Anna Maria Polcari	Kurt & Lynn Schweinshaut	Deborah Scanlon Walsh
David & Patricia Pomeroy	Robert & Suzanne Scolamiero	William & Marie Walsh
Bob & Evelyn Porter	Stephen & Wendy Scribner	Kenneth Ware
Neal Price	Eric Shabsshelowitz	Mike & Lisa Webb
A. S. Proctor	Helen Shackford	Ellyn Weisel
Profile Subaru	David Shedd	Donald & Susan Wells
James A Progin	Dan & Rosemary Sheehan	White Mountain Stove Shop
David Publicover & Betsy Rand	Ellen Sheehan	Tracy Coleman & John Wiley
Steve Puzas	Norman & Geraldine Shepherd	Mike Wiley
James Quadros	Terry Sherlock	Edward & Willa Wolcott
Jane & Armand Query	Christopher & Edith Shipley	Deborah & David Wright
Dick & Denny Quinn	Meghan Simone	Ken Wyman
Kenneth & Jane Rancourt	R. Blake Smith	Charles & Arlene Zaccaria
Peter Rattay	Elizabeth & Michael Smither	
Barbara & Paul Ray	David J. Sommers	
Red Parka Pub - Bingo Night	Jessica & Mark Spaulding	
Christopher & Amy Remondi	Paul & Lorraine Squatrito	
George & Frances Rhoads	Ruth & Tyler Stevens	
Jackie & Adam Rivard	Greg & Andrea Stidsen	
Evelyn Rivers	Marcello Stisi	
Toby & Stephanie Roberts	Edward Stowell, Sr.	
David & Carol Roberts	Mark Sugermeyer & Mary Ann Albertine	
Debra & Gordon Robinson	Elois H. Sullivan	
Roden Family	Robert & Eileen Sullivan	
Frederick D Rogers	Charles Sutton	
Stephen Romano & Marie O'Donnell	Carol V Swanson	
Judy & Charles Rososky	John & Clare Swayze	
Paul & Louise Roth	Theresa Symes	
Martha Rounds	Dennis Symes	
Wayne Ruggles	Patricia C Talty	
Ellen Russell & Peter Foley	Michael Tamulis	
Elaine Ryan	Tarkowski Family	
Angelo Salamone	Paul & Shirley Taylor	
Alice Salvas	Douglas & Mary Anne Taylor	